

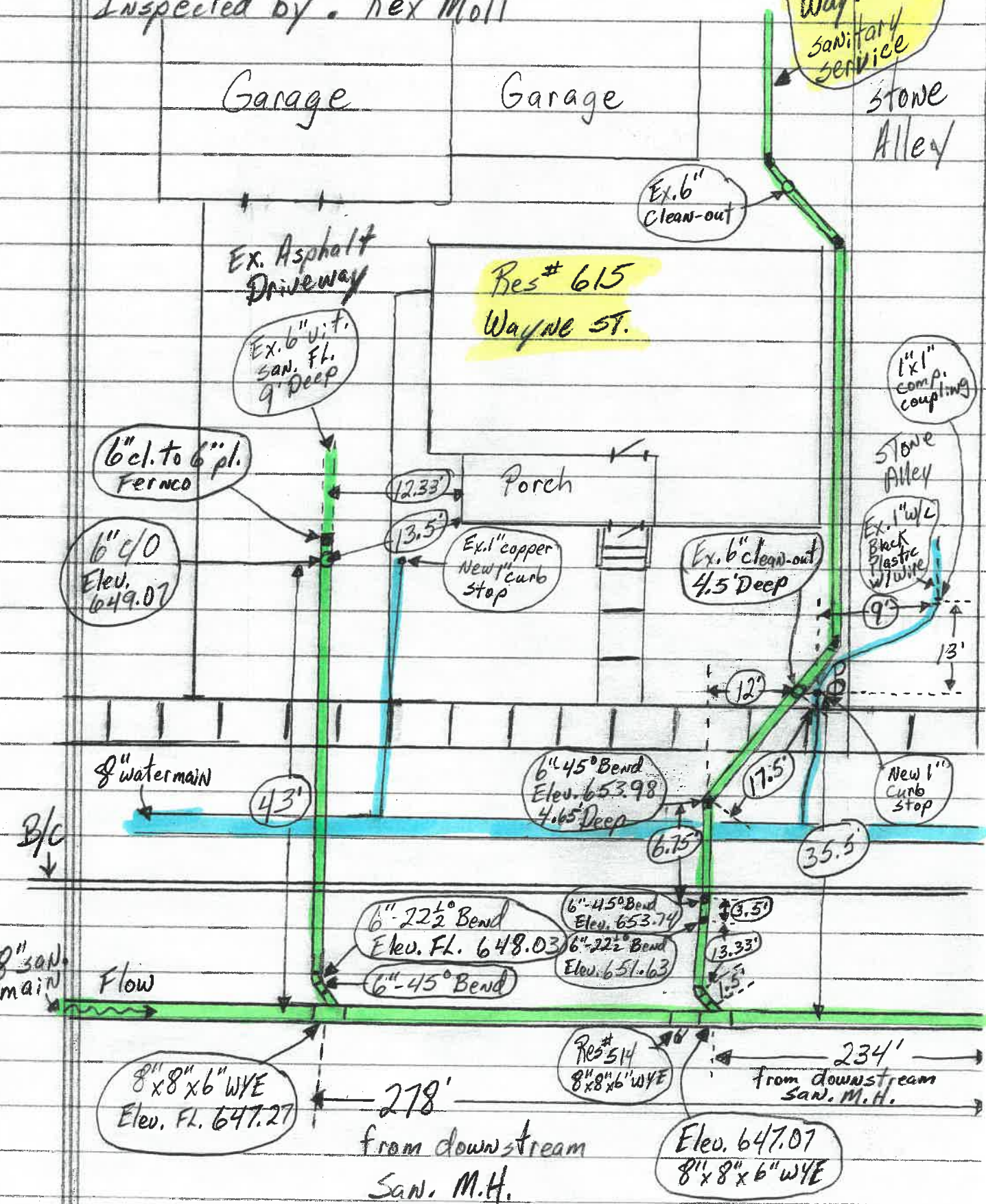
Date Installed: 9-28-06  
 Installed by: Kingvia Excavating, Inc.  
 Inspected by: Rex Moll

Res # 619  
 Wayne ST.  
 Sanitary Service

Garage Garage

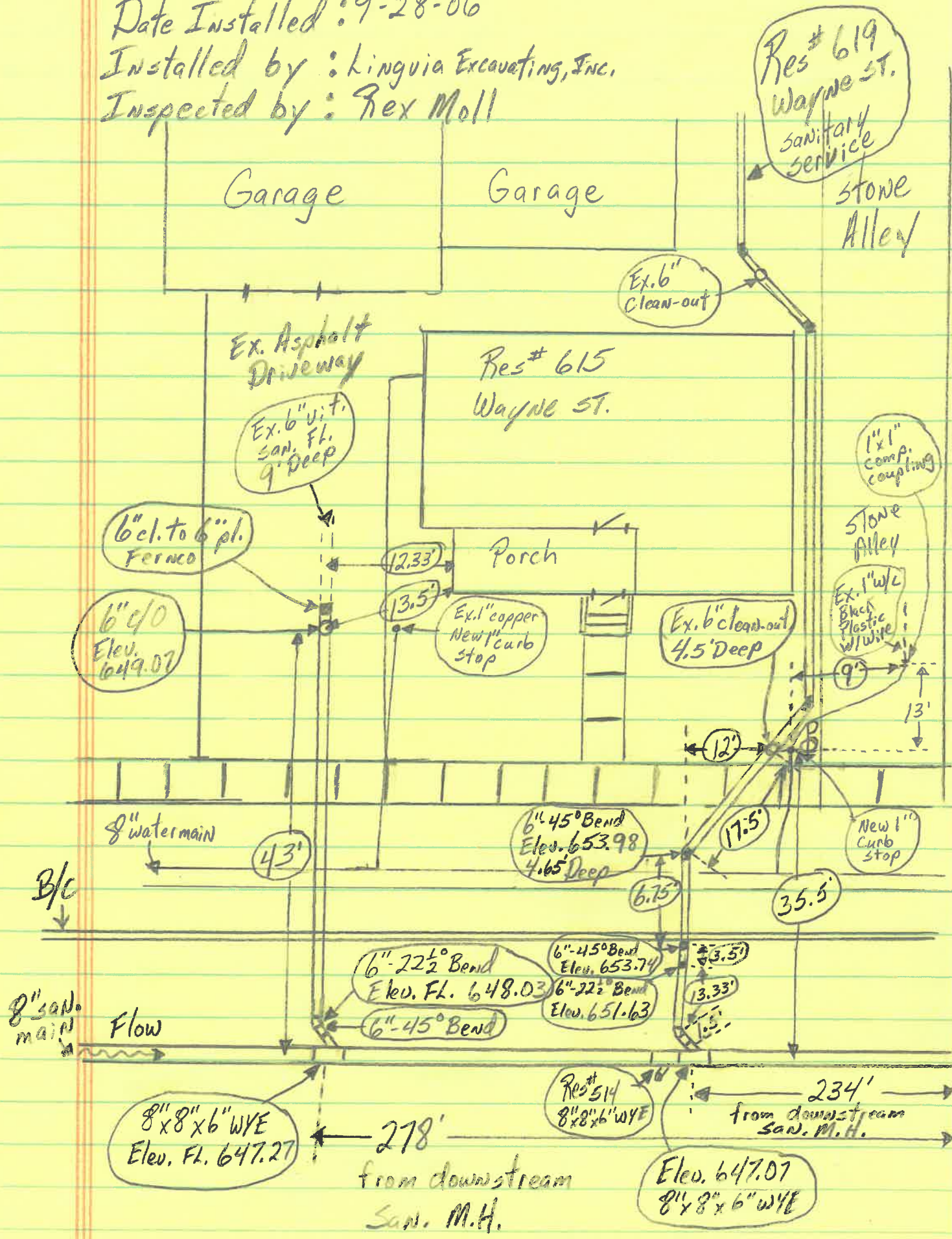
Stone Alley

Res # 615  
 Wayne ST.





Date Installed: 9-28-06  
 Installed by: Lingvia Excavating, Inc.  
 Inspected by: Rex Moll



Res # 619  
 Wayne ST.  
 Sanitary Service

Garage

Garage

Stone Alley

Ex. 6" Clean-out

Ex. Asphalt Driveway

Res # 615  
 Wayne ST.

Ex. 6" v.t. San. Fl. 9' Deep

6" cl. to 6" pl. Fernco

12.33'

Porch

1" x 1" comp. coupling

6" c/o Elev. 649.07

13.5'

Ex. 1" copper New 1" curb stop

Ex. 6" clean-out 4.5' Deep

Stone Alley

Ex. 1" w/c Black Plastic w/wire

9"

13'

12'

8" watermain

43'

6" 45° Bend Elev. 653.98 4.65' Deep

New 1" Curb stop

B/c

6.75'

17.5'

35.5'

8" San. main

Flow

6" 22½° Bend Elev. FL. 648.03

6" 45° Bend Elev. 653.74

3.5'

6" 22½° Bend Elev. 651.63

13.33'

6" 45° Bend

1.5'

8" x 8" x 6" WYE Elev. FL. 647.27

278'

from downstream San. M.H.

Res # 514 8" x 8" x 6" WYE

234' from downstream San. M.H.

Elev. 647.07 8" x 8" x 6" WYE



Date Installed: 9-28-06  
 Installed by: Lingua Excavating, Inc.  
 Inspected by: Rex Moll

Res # 619  
 Wayne ST.  
 Sanitary service

Garage

Garage

Stone Alley

Res # 615  
 Wayne ST.

